

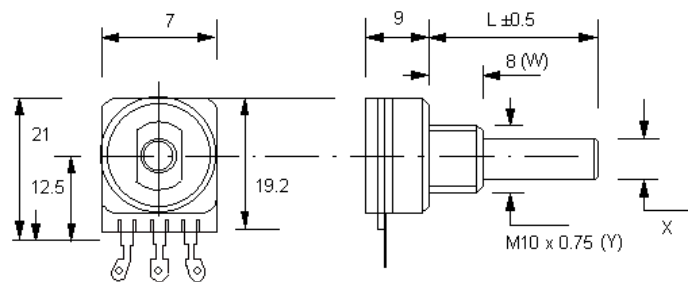
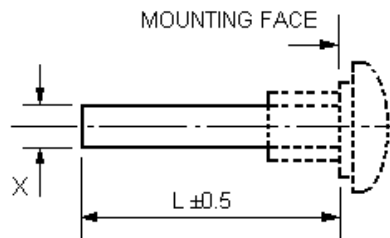


Entsprechend RoHS
(EG2002/95/EC)

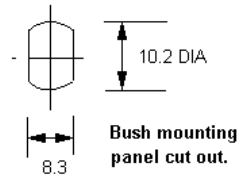


ALPHASTAT 16 OW16ECO

Ausführung / construction: ISO
 Welle / shaft: \varnothing 4 mm, L = 30 mm
 \varnothing 6 mm, L = 35 mm
 Buchse / bushing: M10 x 0,75
 Drehbereich / rotation angle: 300°
 Drahtanschlussausführung / ordinary wiring (OW)
 Conductive Plastic



Type	Desc. (X)	L (mm)
F21	\varnothing 4 mm	14 - 35
F1	\varnothing 6 mm	14 - 65



	4 mm Welle F21-PC			6 mm Welle F1-PC			4 mm Welle F21-OW			6 mm Welle F1-OW		
	lin.	poslog	neglog	lin.	poslog	neglog	lin.	poslog	neglog	lin.	poslog	neglog
100 R												
220 R												
470 R												
1 k							7152			7232*		
2,2 k							7153			7233*		
4,7 k							7154	7167		7234*	7247	
10 k							7155	7168		7235*	7248	
22 k							7156	7169		7236*	7249	
47 k							7157	7170		7237*	7250	
100 k							7158	7171		7238*	7251	
220 k							7159	7172		7239*	7252	
470 k							7160	7173		7240*	7253	
1 M							7161			7241*		
2,2 M												
4,7 M												

* lagermäßige Ausführungen \\ * in stock