

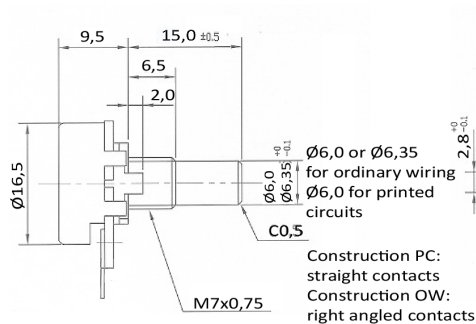
## ALPHA POT 16 RV16A-10

Ausführung / construction: Mono / single turn  
 Welle / shaft:  $\varnothing$  6 mm, L = 15 mm oder / or  
 $\varnothing$  6,35 mm, L = 15 mm Rundwelle  
 Buchse / bushing: M7 x 0,75  
 Drehbereich / rotation angle:  $300^\circ \pm 5\%$   
 Belastbarkeit / rated wattage: lin. 0,2 W / log 0,05 W

Kontakte: SPCC, kalt gewalzter Stahl, vernickelt / Cold rolled steel sheets, nickel plated

Gültig für:  
Valid for:

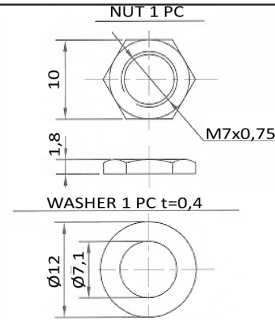
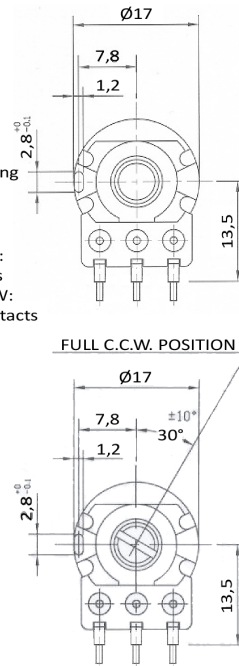
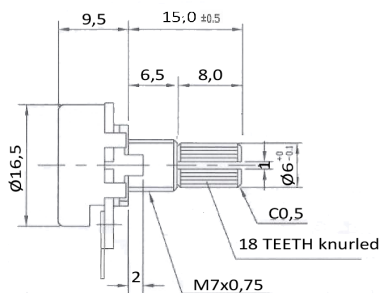
9202-9224  
9302-9324  
9402-9424



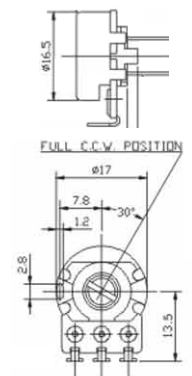
Construction PC:  
straight contacts  
Construction OW:  
right angled contacts

Gültig für:  
Valid for:

9502-9524



Drahtanschluss (OW)



	RV16A-10 6,0 mm Welle Drahtanschluss (OW)			RV16A-10 6,35 mm Welle Drahtanschluss (OW)			RV16A-20 6,0 mm Welle Printanschluss (PC)			RV16A-20 18 Zähne Printanschluss (PC)		
	lin.	poslog	neglog	lin.	poslog	neglog	lin.	poslog	neglog	lin.	poslog	neglog
1 k	9202*			9302*		9330	9402*			9502*		
2 k		9215*			9315*			9415			9515	
2,5 k	9203*	9216*		9303*	9316*		9403*	9416		9503*	9516	
5 k	9204*	9217*		9304*	9317*	9332	9404*	9417		9504*	9517	
10 k	9205*	9218*		9305*	9318*	9333	9405*	9418		9505*	9518	
25 k	9206*	9219*		9306*	9319*	9334	9406*	9419		9506*	9519	
50 k	9207*	9220*		9307*	9320*	9335	9407*	9420		9507*	9520	
100 k	9208*	9221*		9308*	9321*	9336	9408*	9421		9508*	9521	
250 k	9209*	9222*		9309*	9322*	9337	9409	9422		9509	9522	
500 k	9210*	9223*		9310*	9323*	9338	9410	9423		9510	9523	
1 M	9211*	9224*		9311*	9324*	9339	9411	9424		9511	9524	

\* lagermäßige Ausführungen (unverbindlich) \\ \* in stock (non-binding)