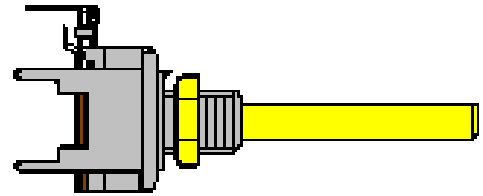




Entsprechend RoHS  
(EG2002/95/EC)



Ausführung / construction: Mono mit Tragkäfig / single turn with bracket

Welle / shaft:  $\varnothing$  4 mm, L = 30 mm

Buchse / bushing: M7 x 0,75

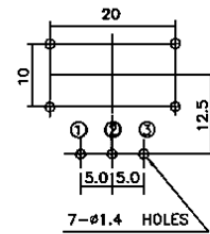
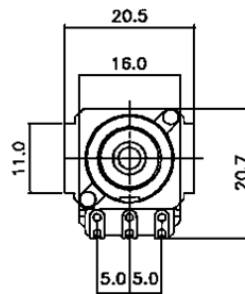
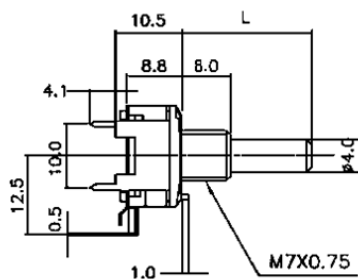
Drehbereich / rotation angle:  $270^\circ \pm 5\%$

Belastbarkeit / rated wattage: lin. 0,2 W / log 0,05 W

Printausführung / for printed circuits (PC)

Kontakte: SPCC, kalt gewalzter Stahl, vernickelt / Cold rolled steel sheets, nickel plated

## ALPHASTAT 16 63250-214XX



	Standard 63250-21400/—			Mittenrast / center click 63250-21410/—			Rast 11 / 11 clicks 63250-21420/—			Rast 41 / 41 clicks 63250-21440/—		
	lin.	poslog	neglog	lin.	poslog	neglog	lin.	poslog	neglog	lin.	poslog	neglog
<b>1 k</b>	3002*			3042			3082			3122		
<b>2 k</b>		3015	3030		3055	3070		3095	3110		3135	3150
<b>2,5 k</b>	3003*	3016		3043	3056		3083	3096		3123*	3136	
<b>5 k</b>	3004*	3017	3032	3044	3057	3072	3084	3097	3112	3124*	3137	3152
<b>10 k</b>	3005*	3018*	3033	3045	3058	3073	3085	3098	3113	3125	3138	3153
<b>25 k</b>	3006*	3019		3046	3059		3086	3099	3126	3126*	3139	
<b>50 k</b>	3007*	3020	3035	3047	3060	3075	3087	3100	3115	3127	3140	3155
<b>100 k</b>	3008*	3021	3036	3048	3061	3076	3088	3101	3116	3128	3141	3156
<b>250 k</b>	3009*	3022		3049	3062		3089	3102		3129	3142	
<b>500 k</b>	3010*	3023		3050	3063		3090	3103		3130	3143	
<b>1 M</b>	3011*	3024		3051	3064		3091	3104		3131	3144	

\* lagermäßige Ausführungen (unverbindlich) \\ \* in stock (non-binding)